

**RELIGIOUS/
EDUCATIONAL
FACILITY**



BEN CHERRY, CCIM

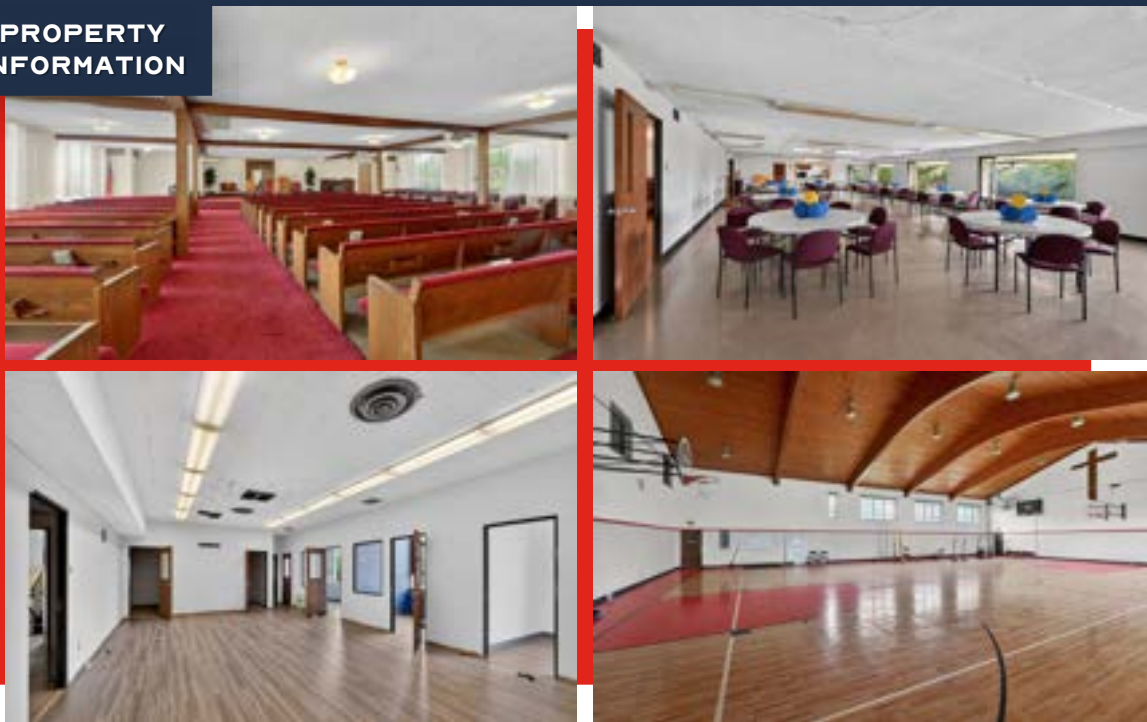
Phone: 314.647.6611 ext. 115
Ben@ManorRealEstate.com

DILLON FLYNN

Phone: 314.647.6611 ext. 124
Dillon@ManorRealEstate.com

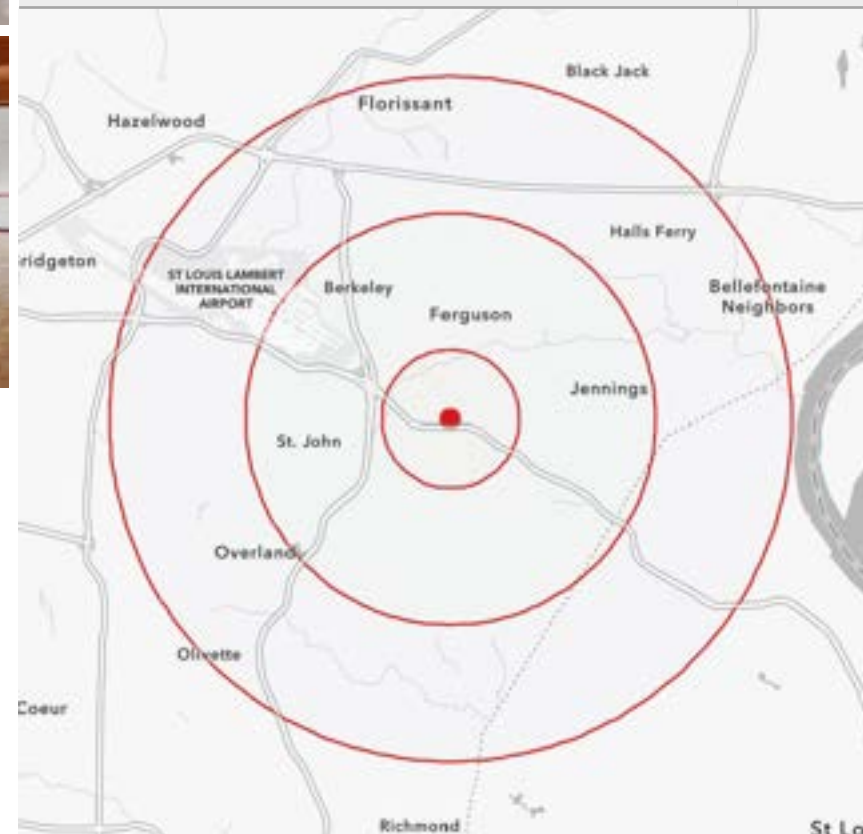
**206 EMERLING DRIVE
ST. LOUIS, MO 63121
~45,612 S.F. | \$1,699,000 (\$37.25/S.F.)**

PROPERTY INFORMATION



- RELIGIOUS / EDUCATIONAL FACILITY CONSISTING OF 2 BUILDINGS
- ~45,612 SF OF EXISTING IMPROVEMENTS INCLUDING A LARGE SANCTUARY, CLASSROOMS, GYM AND SUPPORTING SPACES
- I-70 VISIBILITY, 158,032 VEHICLES PER DAY
- 130 SURFACE PARKING SPACES
- 10.74 ACRES SITE IN INNER-RING ST. LOUIS COUNTY
- CLAYCO HQ, EXPRESS SCRIPTS, AMAZON WAREHOUSE, UMSL AND LAMBERT INT'L AIRPORT ALL WITHIN 0.5 MILES

DEMOGRAPHICS		1 MILE	3 MILES	5 MILES
POPULATION		7,524	85,356	261,128
HOUSEHOLDS		3,102	35,544	112,121
AVERAGE HH INCOME		\$63,398	\$61,386	\$77,697



BEN CHERRY, CCIM

Phone: 314.647.6611 ext. 115
Ben@ManorRealEstate.com

DILLON FLYNN

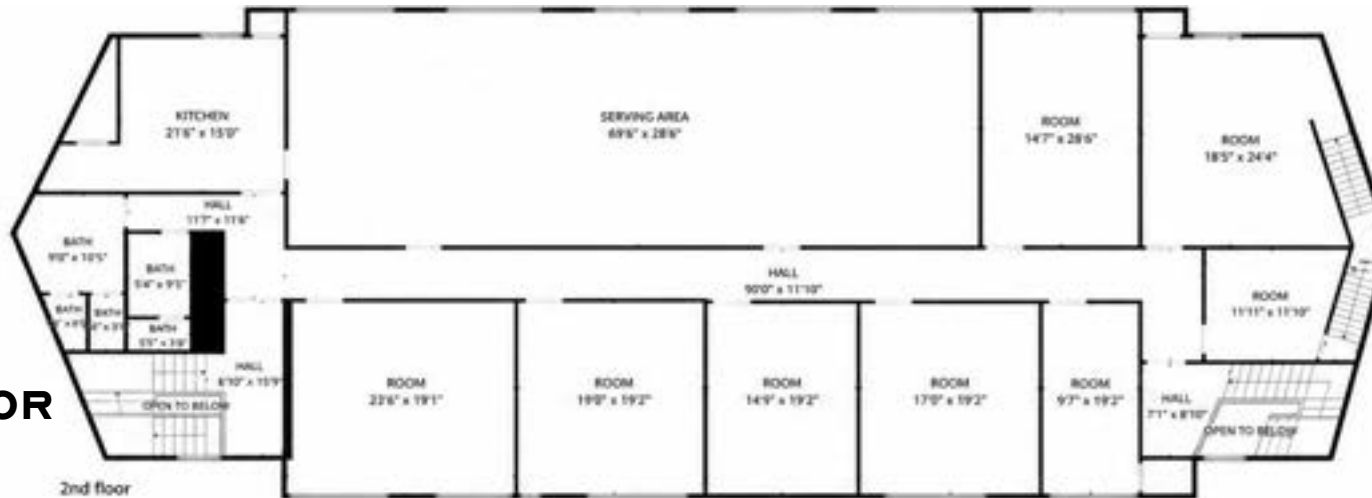
Phone: 314.647.6611 ext. 124
Dillon@ManorRealEstate.com

**206 EMERLING DRIVE
 ST. LOUIS, MO 63121**

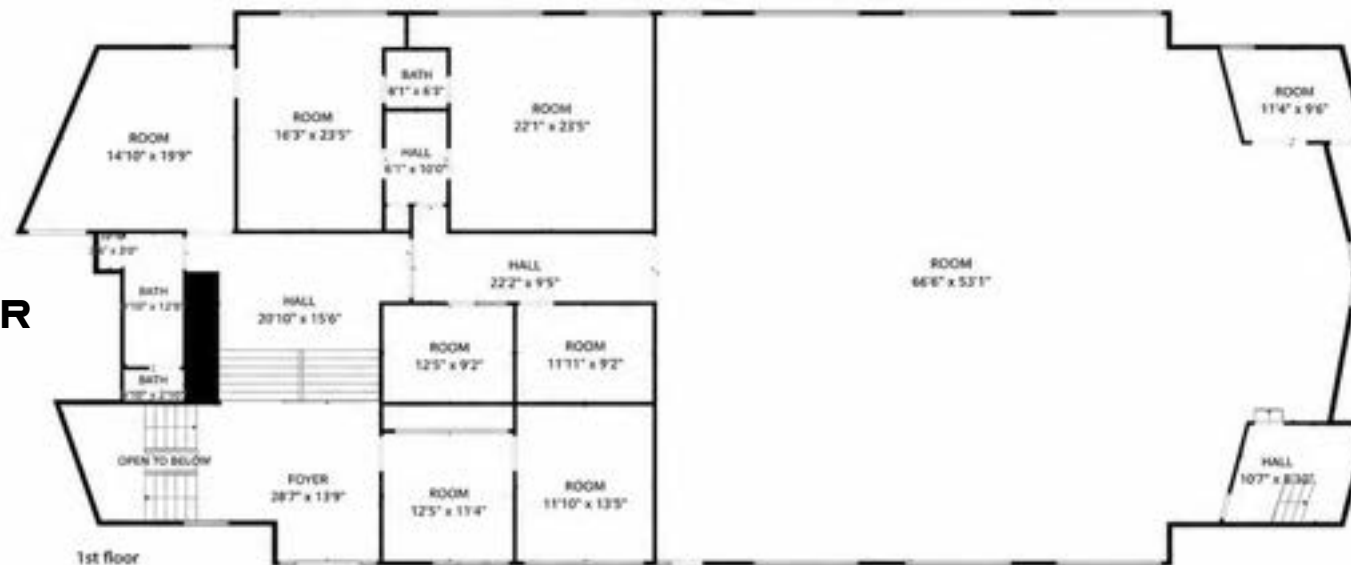
~45,612 S.F. | \$1,699,000 (\$37.25/S.F.)

BUILDING A

SECOND FLOOR



FIRST FLOOR



**TOTAL SQUARE
FOOTAGE:
~17,928 S.F.**

BEN CHERRY, CCIM

Phone: 314.647.6611 ext. 115
Ben@ManorRealEstate.com

DILLON FLYNN

Phone: 314.647.6611 ext. 124
Dillon@ManorRealEstate.com

206 EMERLING DRIVE
ST. LOUIS, MO 63121
~45,612 S.F. | \$1,699,000 (\$37.25/S.F.)

BUILDING B

SECOND FLOOR



FIRST FLOOR



LOWER LEVEL



TOTAL SQUARE FOOTAGE: ~27,684 S.F.

BEN CHERRY, CCIM

Phone: 314.647.6611 ext. 115
Ben@ManorRealEstate.com

DILLON FLYNN

Phone: 314.647.6611 ext. 124
Dillon@ManorRealEstate.com

206 EMERLING DRIVE
ST. LOUIS, MO 63121
~45,612 S.F. | \$1,699,000 (\$37.25/S.F.)

AERIAL



BEN CHERRY, CCIM

Phone: 314.647.6611 ext. 115
Ben@ManorRealEstate.com

DILLON FLYNN

Phone: 314.647.6611 ext. 124
Dillon@ManorRealEstate.com

206 EMERLING DRIVE
ST. LOUIS, MO 63121
~45,612 S.F. | \$1,699,000 (\$37.25/S.F.)