

CHESTERFIELD FLEX CONDO



BEN CHERRY, CCIM

Phone: 314.647.6611 ext. 115
Ben@ManorRealEstate.com

EDDIE CHERRY, CCIM

Phone: 314.647.6611 ext. 113
Eddie@ManorRealEstate.com

**175 CHESTERFIELD INDUSTRIAL BLVD.
ST. LOUIS, MO 63005
2,752 S.F. | \$459,000 (\$166.78/S.F.)**

PROPERTY INFORMATION



- **VERSATILE FLEX CONDOMINIUM IN PRIME CHESTERFIELD LOCATION**
- **EXCELLENT OWNER-OCCUPANT OPPORTUNITY**
- **DOCK-HIGH LOADING (CURRENTLY HAS CONCRETE DRIVE-IN RAMP)**
- **16' 8" CLEAR TO DECK**
- **FULLY-SPRINKLERED**
- **LOCATED IN CHESTERFIELD INDUSTRIAL WITH IMMEDIATE PROXIMITY TO I-64**

DEMOGRAPHICS	1 MILE	3 MILES	5 MILES
POPULATION	1,024	17,502	79,645
HOUSEHOLDS	287	6,445	30,090
AVERAGE HH INCOME	\$309,427	\$254,710	\$201,915



BEN CHERRY, CCIM

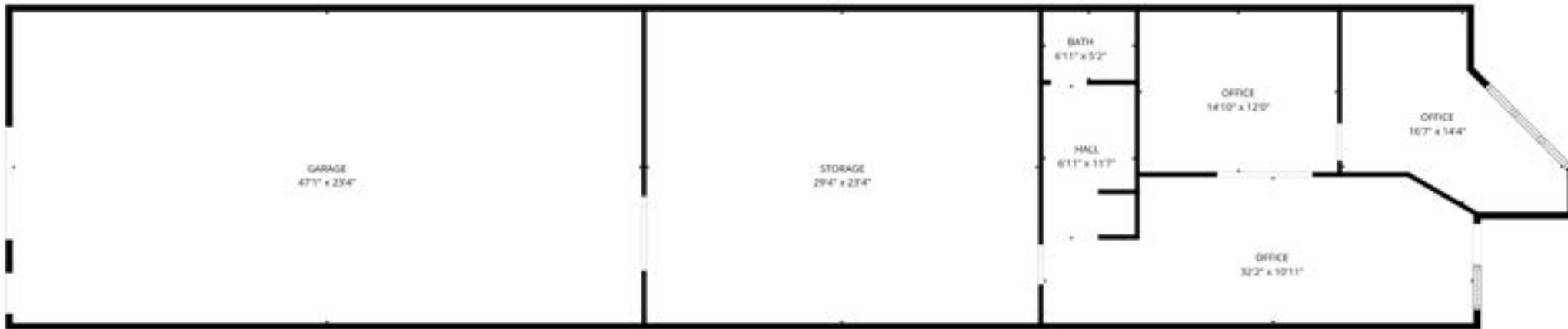
Phone: 314.647.6611 ext. 115
Ben@ManorRealEstate.com

EDDIE CHERRY, CCIM

Phone: 314.647.6611 ext. 113
Eddie@ManorRealEstate.com

**175 CHESTERFIELD INDUSTRIAL BLVD.
 ST. LOUIS, MO 63005
 2,752 S.F. | \$459,000 (\$166.78/S.F.)**

FLOOR PLAN



BEN CHERRY, CCIM

Phone: 314.647.6611 ext. 115
Ben@ManorRealEstate.com

EDDIE CHERRY, CCIM

Phone: 314.647.6611 ext. 113
Eddie@ManorRealEstate.com

175 CHESTERFIELD INDUSTRIAL BLVD.
ST. LOUIS, MO 63005
2,752 S.F. | \$459,000 (\$166.78/S.F.)