



**PROSPECT
CENTER OFFICE
PARK**

CALEB ANTHONIS

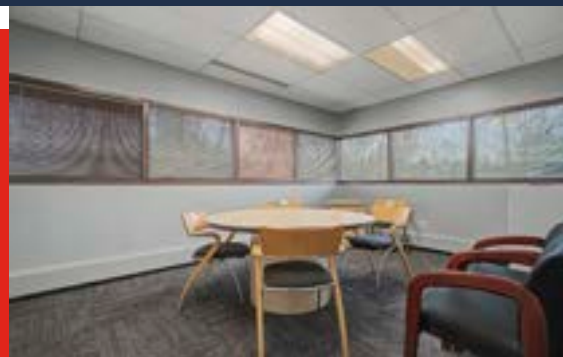
Phone: 314.647.6611 ext. 126
Caleb@ManorRealEstate.com

DILLON FLYNN

Phone: 314.647.6611 ext. 124
Dillon@ManorRealEstate.com

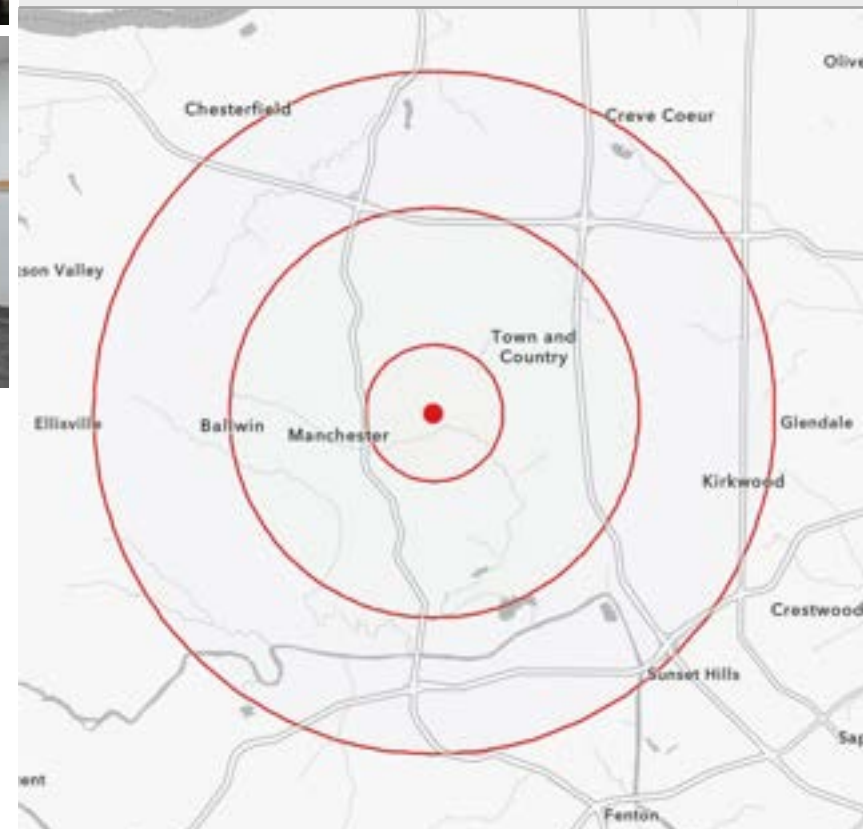
**301 SOVEREIGN COURT
ST. LOUIS, MO 63011
150-1,625 S.F. | \$20.00/S.F. F.S.**

PROPERTY INFORMATION



- LOCATED IN A PRIME WEST COUNTY CORRIDOR WITH DIRECT ACCESS TO MANCHESTER ROAD AND HIGHWAY I41
- SUITES AVAILABLE FROM 150 TO 1,625 SF, OFFERING FLEXIBILITY FOR A RANGE OF OFFICE CONFIGURATIONS
- SURROUNDED BY ONE OF THE REGION'S MOST AFFLUENT DEMOGRAPHICS, WITH AVERAGE HOUSEHOLD INCOMES EXCEEDING \$171,000 WITHIN ONE MILE
- FULL-SERVICE LEASE STRUCTURE AT \$20.00/SF ELIMINATES THE COMPLEXITY OF SEPARATE OPERATING EXPENSE RECONCILIATIONS
- AMPLE ON-SITE PARKING IN A PROFESSIONALLY MANAGED OFFICE PARK SETTING

DEMOGRAPHICS	1 MILE	3 MILES	5 MILES
POPULATION	7,235	69,071	169,510
HOUSEHOLDS	3,044	27,845	67,088
AVERAGE HH INCOME	\$171,805	\$177,351	\$188,665



CALEB ANTHONIS

Phone: 314.647.6611 ext. 126
Caleb@ManorRealEstate.com

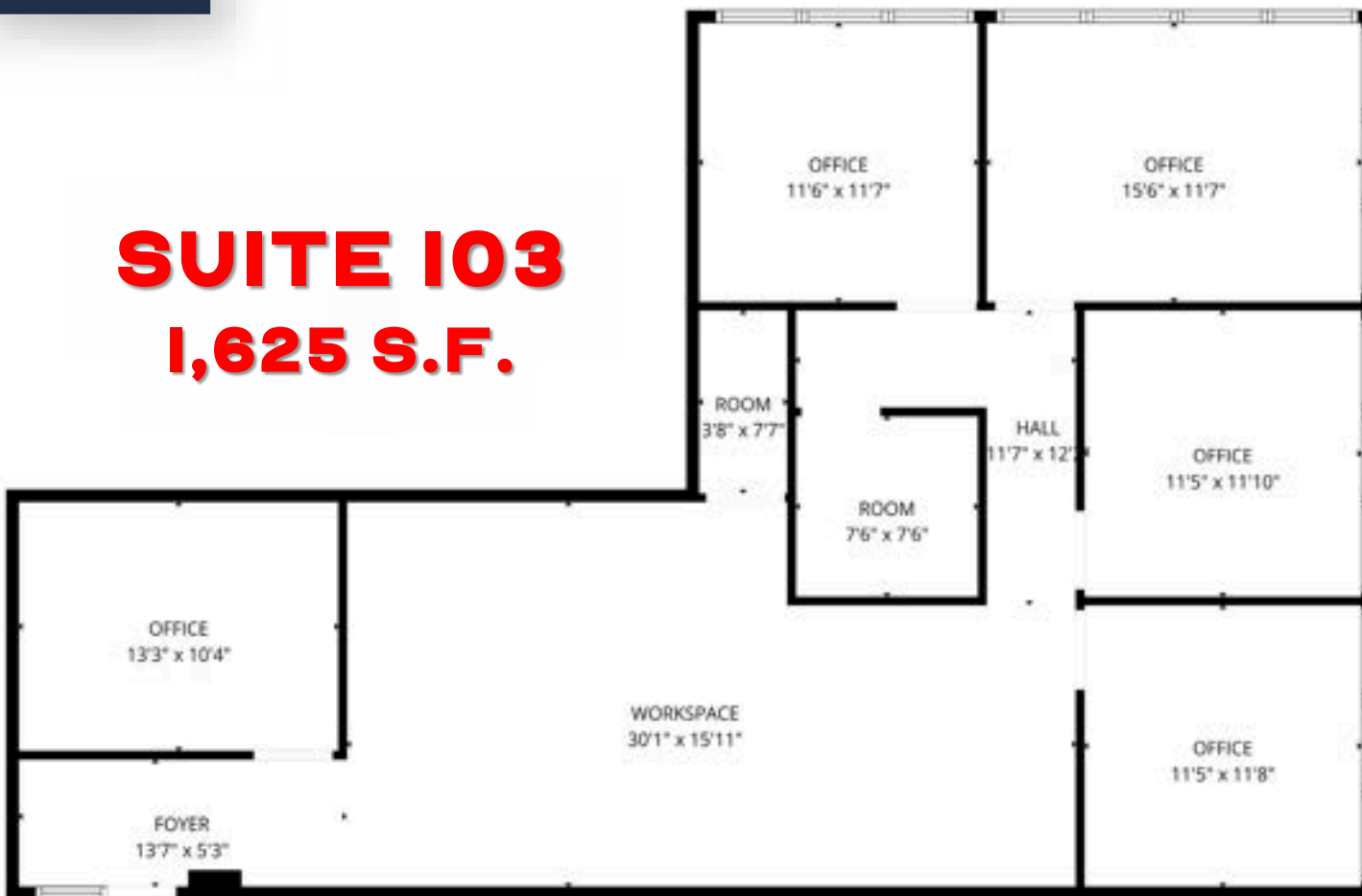
DILLON FLYNN

Phone: 314.647.6611 ext. 124
Dillon@ManorRealEstate.com

**301 SOVEREIGN COURT
 ST. LOUIS, MO 63011
 150-1,625 S.F. | \$20.00/S.F. F.S.**

FLOOR PLAN

**SUITE 103
1,625 S.F.**



OTHER AVAILABLE SUITES

SUITE	SIZE
I19D	150 S.F.
I19E	150 S.F.

FLOOR PLAN CREATED BY CLARKSON HPT. MEASUREMENTS DEEMED HIGHLY RELIABLE BUT NOT GUARANTEED.

CALEB ANTHONIS

Phone: 314.647.6611 ext. 126
Caleb@ManorRealEstate.com

DILLON FLYNN

Phone: 314.647.6611 ext. 124
Dillon@ManorRealEstate.com

**301 SOVEREIGN COURT
ST. LOUIS, MO 63011
150-1,625 S.F. | \$20.00/S.F. F.S.**