



**DOGTOWN  
RETAIL SPACE**

SCAN HERE!

**CALEB ANTHONIS**

Phone: 314.647.6611 ext. 126  
[Caleb@ManorRealEstate.com](mailto:Caleb@ManorRealEstate.com)




**1900 MCCAUSLAND AVENUE  
ST. LOUIS, MO 63117  
1,000 S.F. | \$15.00/S.F. N.N.N.**

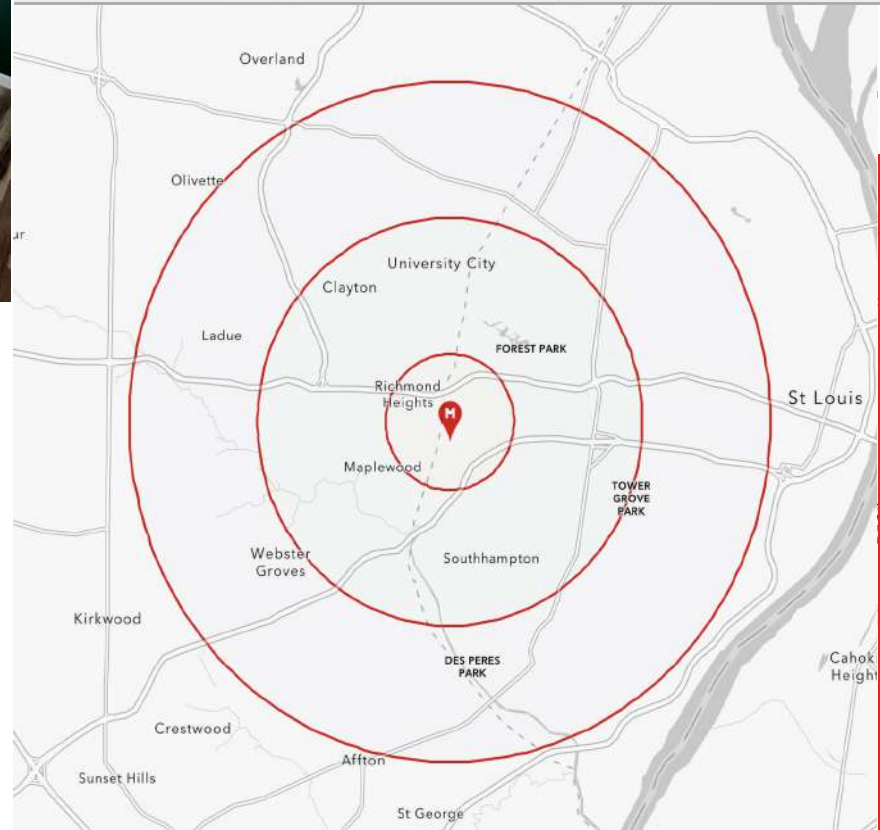


### PROPERTY INFORMATION



- **1,000 S.F. NEWLY RENOVATED RETAIL SPACE ON MCCAUSLAND AVENUE**
- **CONVENIENTLY LOCATED IN THE DOGTOWN NEIGHBORHOOD LESS THAN 1/2 MILE SOUTH OF HWY-40**
- **EXCELLENT OPPORTUNITY FOR A CENTRALLY LOCATED SMALL BOUTIQUE OR SMALL OFFICE**
- **NEW LVP FLOORS THROUGHOUT**

DEMOGRAPHICS	1 MILE	3 MILES	5 MILES
POPULATION 	17,271	142,651	376,164
HOUSEHOLDS 	9,413	70,547	175,480
AVERAGE HH INCOME 	\$95,112	\$115,965	\$102,987



SCAN HERE!

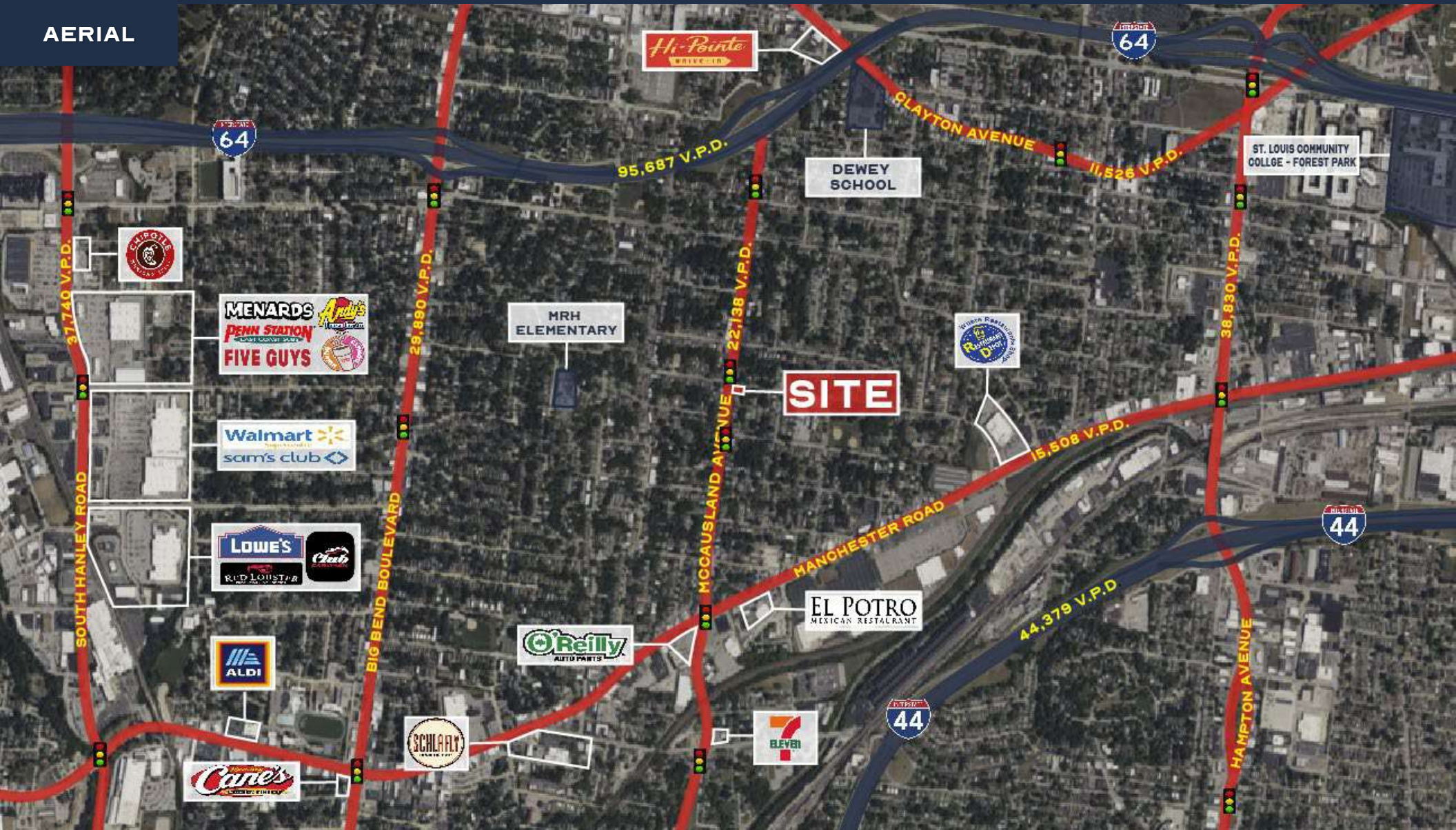


**CALEB ANTHONIS**

Phone: 314.647.6611 ext. 126  
[Caleb@ManorRealEstate.com](mailto:Caleb@ManorRealEstate.com)

**1900 MCCAUSLAND AVENUE  
 ST. LOUIS, MO 63117  
 1,000 S.F. | \$15.00/S.F. N.N.N.**

AERIAL



SCAN HERE!



**CALEB ANTHONIS**

Phone: 314.647.6611 ext. 126  
Caleb@ManorRealEstate.com

**1900 MCCAUSLAND AVENUE**  
ST. LOUIS, MO 63117  
1,000 S.F. | \$15.00/S.F. N.N.N.