



CHESTERFIELD FLEX CONDO



SCAN HERE!



EDDIE CHERRY, CCIM

Phone: 314.647.6611 ext. 113
Eddie@ManorRealEstate.com

BEN CHERRY, CCIM

Phone: 314.647.6611 ext. 115
Ben@ManorRealEstate.com

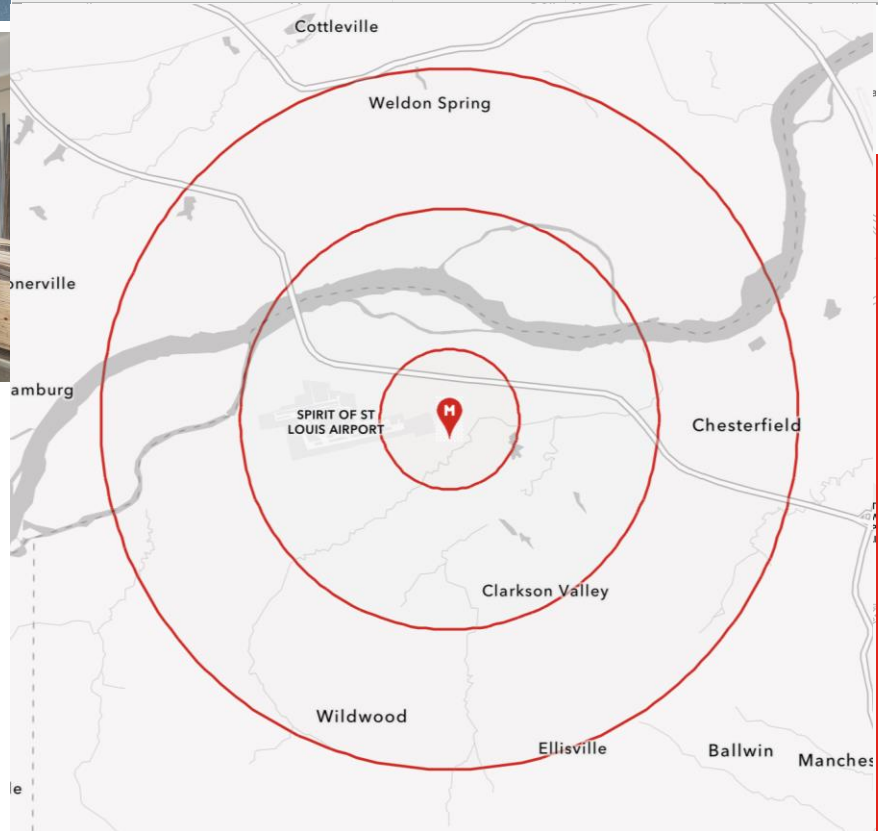
173 CHESTERFIELD INDUSTRIAL BLVD.
CHESTERFIELD, MO 63005
2,902 S.F.
\$459,000 (\$158/S.F.)

PROPERTY INFORMATION



- **VERSATILE FLEX CONDOMINIUM**
- **PRIME CHESTERFIELD LOCATION**
- **EXCELLENT OWNER-OCCUPANT OPPORTUNITY**
- **DOCK-HIGH LOADING**
- **16'8" CLEAR TO DECK**
- **FULLY-SPRINKLERED**
- **LOCATED IN CHESTERFIELD INDUSTRIAL WITH IMMEDIATE PROXIMITY TO I-64**

DEMOGRAPHICS		1 MILE	3 MILES	5 MILES
POPULATION		1,063	17,124	79,080
HOUSEHOLDS		296	5,301	29,765
AVERAGE HH INCOME		\$266,276	\$229,003	\$188,163



SCAN HERE!



EDDIE CHERRY, CCIM

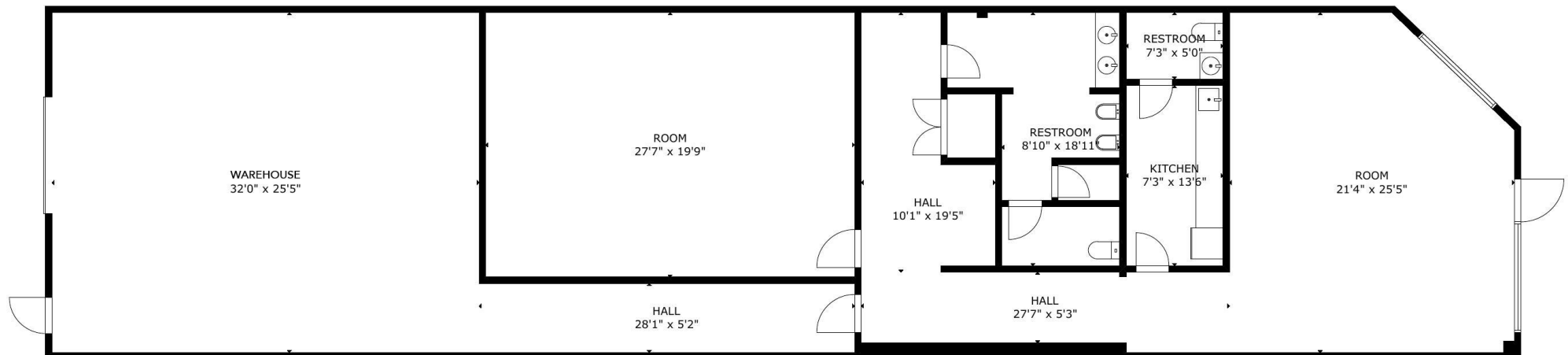
Phone: 314.647.6611 ext. 113
Eddie@ManorRealEstate.com

BEN CHERRY, CCIM

Phone: 314.647.6611 ext. 115
Ben@ManorRealEstate.com

173 CHESTERFIELD INDUSTRIAL BLVD.
CHESTERFIELD, MO 63005
2,902 S.F.
\$459,000 (\$158/S.F.)

FLOOR PLAN



SCAN HERE!



EDDIE CHERRY, CCIM

Phone: 314.647.6611 ext. 113
Eddie@ManorRealEstate.com

BEN CHERRY, CCIM

Phone: 314.647.6611 ext. 115
Ben@ManorRealEstate.com

**173 CHESTERFIELD INDUSTRIAL BLVD.
CHESTERFIELD, MO 63005
2,902 S.F.
\$459,000 (\$158/S.F.)**