

FARMINGTON DEVELOPMENT SITE



SITE

SCAN HERE!



EDDIE CHERRY

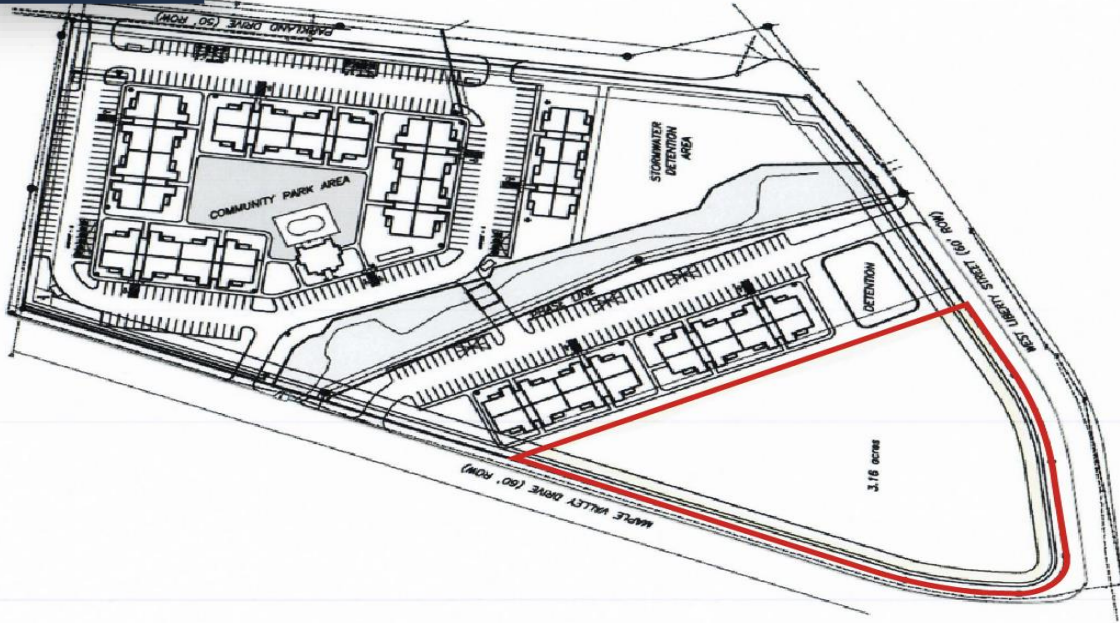
Phone: 314.647.6611 ext. 113
Eddie@ManorRealEstate.com

BEN CHERRY, CCIM

Phone: 314.647.6611 ext. 115
Ben@ManorRealEstate.com

MAPLE VALLEY DRIVE
FARMINGTON, MO 63640
3.17 ACRES | \$822,089 (\$5.95 PSF)

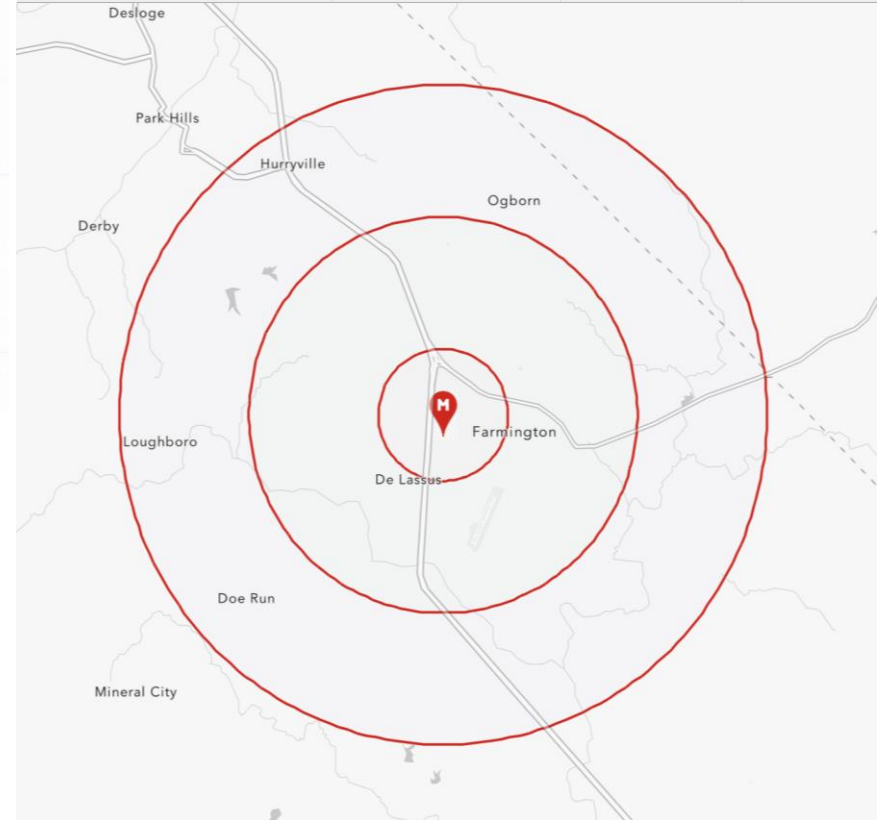
PROPERTY INFORMATION



- DEVELOPMENT-READY SITE ON FARMINGTON'S BOOMING MAPLE VALLEY CORRIDOR
- EXCELLENT VISIBILITY TO HIGHWAY 67 WITH OVER 21,000 V.P.D.
- ADJACENT TO PARKLAND HEALTH CENTER, FARMINGTON HIGH SCHOOL AND CEDARHURST OF FARMINGTON
- ALL UTILITIES TO THE SITE (GAS, ELECTRIC, WATER AND SEWER)
- ZONED OA-I COMMERCIAL ("OFFICE AND APARTMENT DISTRICT")
- POTENTIAL FOR MEDICAL OFFICE, APARTMENTS OR RETAIL USE

DEMOGRAPHICS

		1 MILE	3 MILES	5 MILES
POPULATION		4,477	20,878	26,954
HOUSEHOLDS		1,842	7,582	9,745
AVERAGE HH INCOME		\$71,954	\$76,839	\$79,538



SCAN HERE!



EDDIE CHERRY

Phone: 314.647.6611 ext. 113
Eddie@ManorRealEstate.com

BEN CHERRY, CCIM

Phone: 314.647.6611 ext. 115
Ben@ManorRealEstate.com

**MAPLE VALLEY DRIVE
FARMINGTON, MO 63640
3.17 ACRES | \$822,089 (\$5.95 PSF)**

ZOOM
AERIAL



SCAN HERE!



EDDIE CHERRY

Phone: 314.647.6611 ext. 113
Eddie@ManorRealEstate.com

BEN CHERRY, CCIM

Phone: 314.647.6611 ext. 115
Ben@ManorRealEstate.com

**MAPLE VALLEY DRIVE
FARMINGTON, MO 63640
3.17 ACRES | \$822,089 (\$5.95 PSF)**