



**2547 South Big Bend
Blvd.**

SCAN HERE!



Mark Clarkson

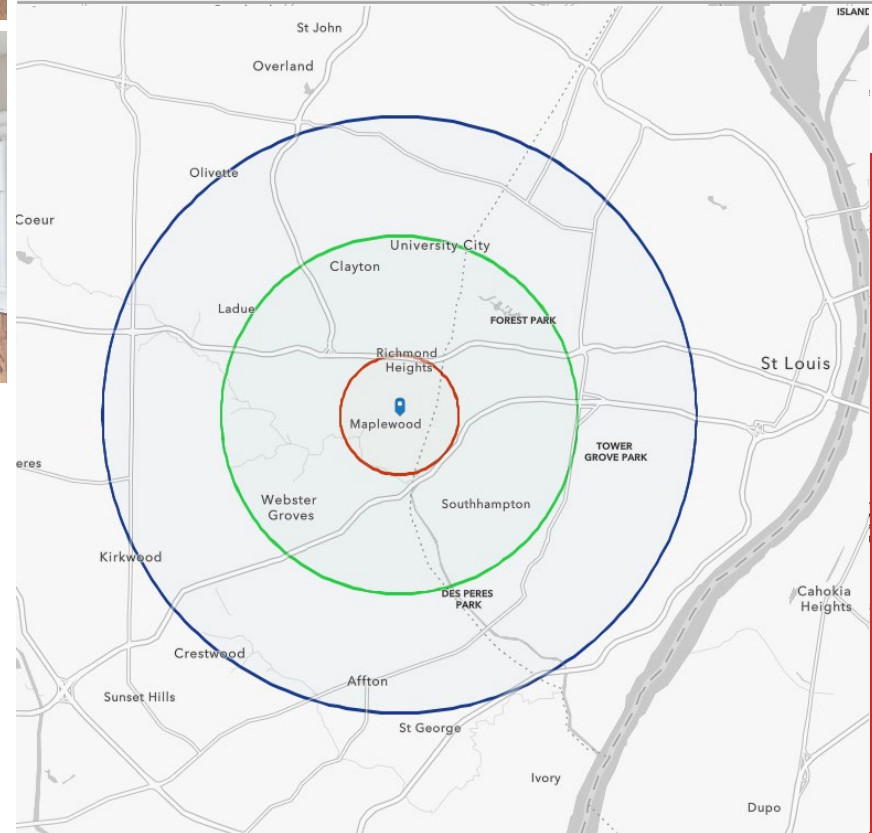
Phone: 314.647.6611 ext. 127
MClarkson@ManorRealEstate.com

2547 South Big Bend Blvd.
St. Louis, MO 63143
2,209 S.F. | \$14.00/S.F. M.G.

PROPERTY INFORMATION



DEMOGRAPHICS		1 MILE	3 MILES	5 MILES
POPULATION		14,676	127,739	361,569
HOUSEHOLDS		7,583	60,197	168,117
AVERAGE HH INCOME		\$88,712	\$123,936	\$107,327



- Highly Visible Location, Fronting To Big Bend Boulevard
- Freestanding Multi-level Office Building with Reception Area, Multiple Offices, Two Restrooms and a Full Walk-out Basement For Storage
- Conveniently Located In Maplewood, Between Highway 40 And Manchester Avenue, With Easy Access To Highway 44
- Minutes Away from Entertainment, Groceries, Restaurants and Shopping

SCAN HERE!

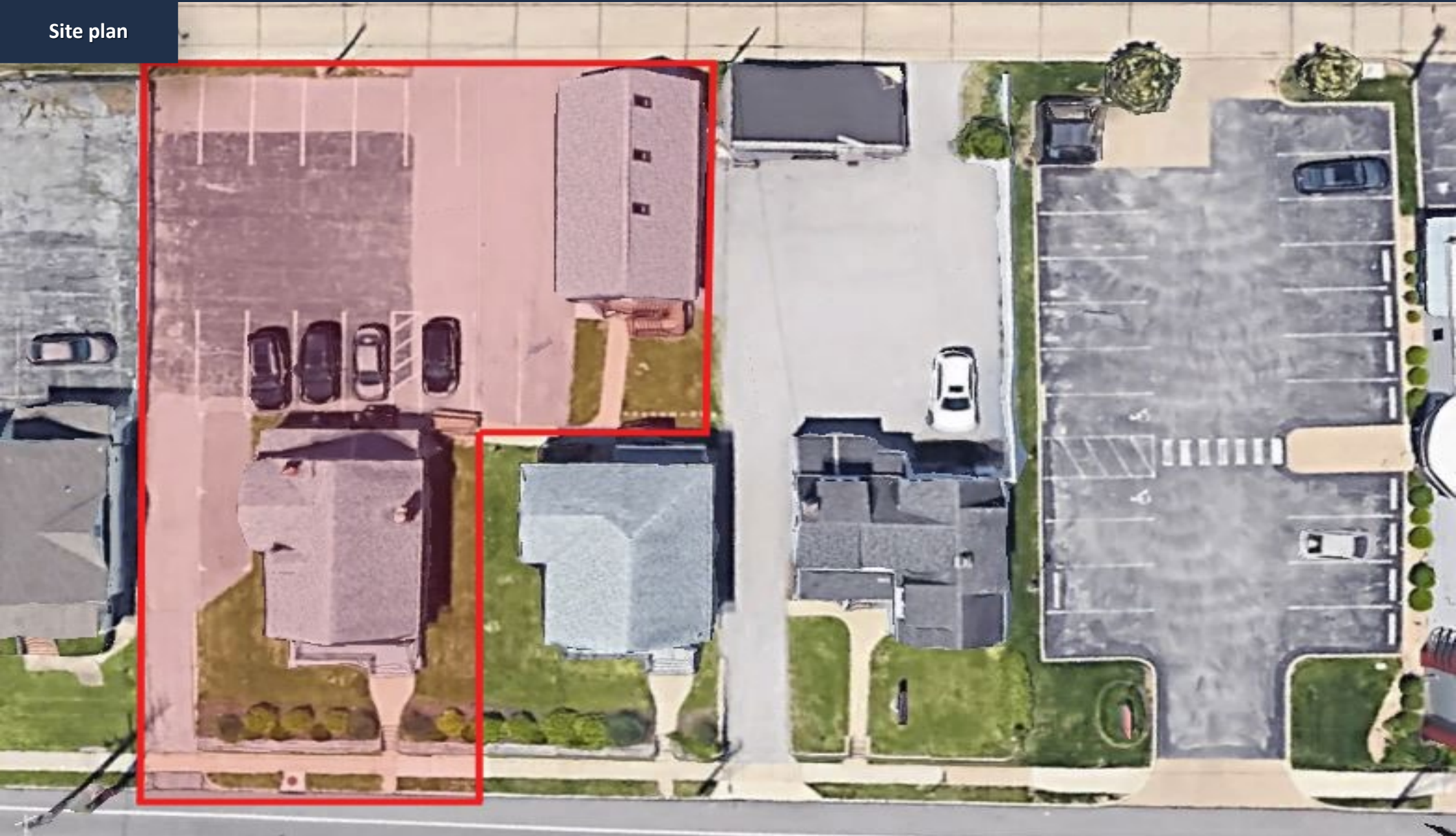


Mark Clarkson

Phone: 314.647.6611 ext. 127
MClarkson@ManorRealEstate.com

2547 South Big Bend Blvd.
 St. Louis, MO 63143
 2,209 S.F. | \$14.00/S.F. M.G.

Site plan



SCAN HERE!



Mark Clarkson

Phone: 314.647.6611 ext. 127
MClarkson@ManorRealEstate.com

2547 South Big Bend Blvd.
St. Louis, MO 63143
2,209 S.F. | \$14.00/S.F. M.G.