



**LINDENWOOD PARK
OFFICE BUILDING**

SCAN HERE!



BEN CHERRY, COIM

Phone: 314.647.6611 ext. 115
Ben@ManorRealEstate.com

CALEB ANTHONIS

Phone: 314.647.6611 ext. 126
Caleb@ManorRealEstate.com

**6901 CHIPPEWA STREET
ST. LOUIS, MO 63109
3,519 S.F. | \$725,000**

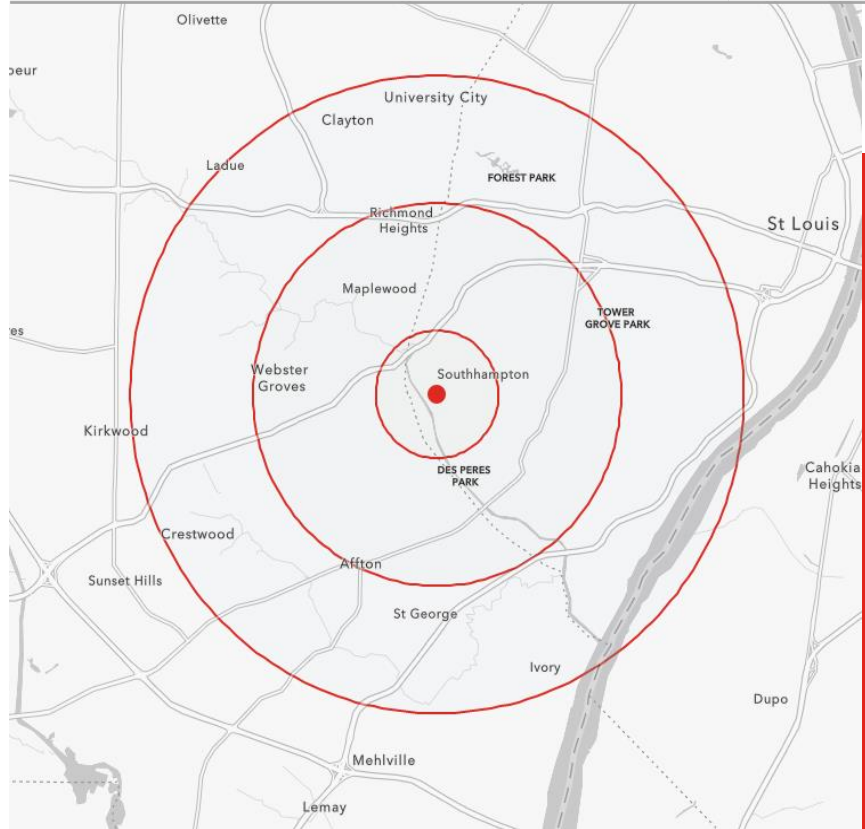
FOR SALE

PROPERTY INFORMATION



- **FREE STANDING OFFICE BUILDING LOCATED ON PROMINENT SIGNALIZED 4-WAY INTERSECTION**
- **POTENTIAL REDEVELOPMENT OPPORTUNITY**
- **24 PARKING SPACES (6.86/1,000 S.F.)**
- **20,000 VEHICLES PER DAY ON CHIPPEWA STREET**
- **0.31 ACRE PARCEL**
- **LOCATED ON THE CORNER OF CHIPPEWA AND JAMIESON IN THE LINDENWOOD PARK NEIGHBORHOOD**

DEMOGRAPHICS		1 MILE	3 MILES	5 MILES
POPULATION		15,415	147,825	365,352
HOUSEHOLDS		7,516	71,841	171,563
AVERAGE HH INCOME		\$103,260	\$90,585	\$85,045



SCAN HERE!



BEN CHERRY, COIM

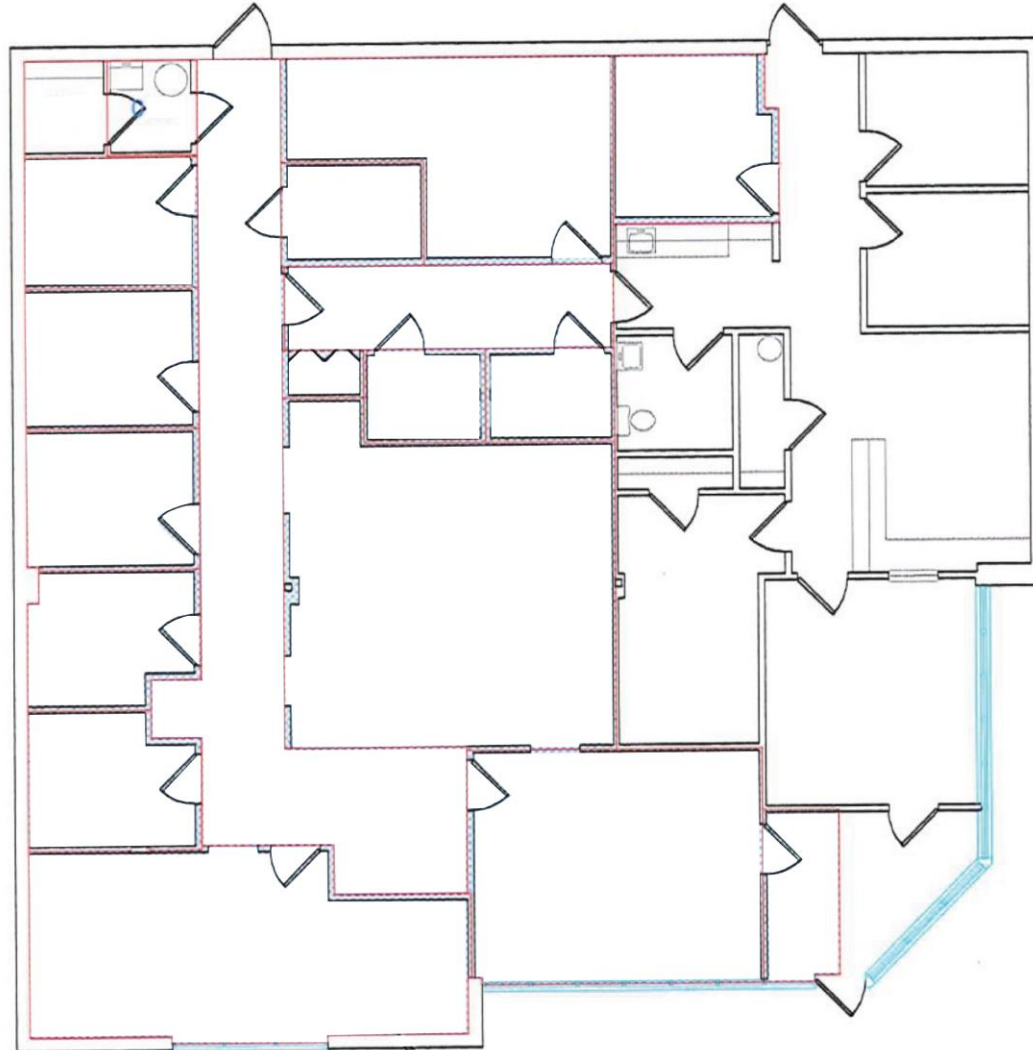
Phone: 314.647.6611 ext. 115
Ben@ManorRealEstate.com

CALEB ANTHONIS

Phone: 314.647.6611 ext. 126
Caleb@ManorRealEstate.com

**6901 CHIPPEWA STREET
 ST. LOUIS, MO 63109
 3,519 S.F. | \$725,000**

FLOOR PLAN



SCAN HERE!



BEN CHERRY, COIM

Phone: 314.647.6611 ext. 115
Ben@ManorRealEstate.com

CALEB ANTHONIS

Phone: 314.647.6611 ext. 126
Caleb@ManorRealEstate.com

6901 CHIPPEWA STREET
ST. LOUIS, MO 63109
3,519 S.F. | \$725,000

AERIAL



SCAN HERE!



BEN CHERRY, COIM **CALEB ANTHONIS**

Phone: 314.647.6611 ext. 115
Ben@ManorRealEstate.com

Phone: 314.647.6611 ext. 126
Caleb@ManorRealEstate.com

6901 CHIPPEWA STREET
ST. LOUIS, MO 63109
3,519 S.F. | \$725,000