



**LINDENWOOD PARK
OFFICE BUILDING**

SCAN HERE!



BEN CHERRY, COIM

Phone: 314.647.6611 ext. 115
Ben@ManorRealEstate.com

CALEB ANTHONIS

Phone: 314.647.6611 ext. 126
Caleb@ManorRealEstate.com

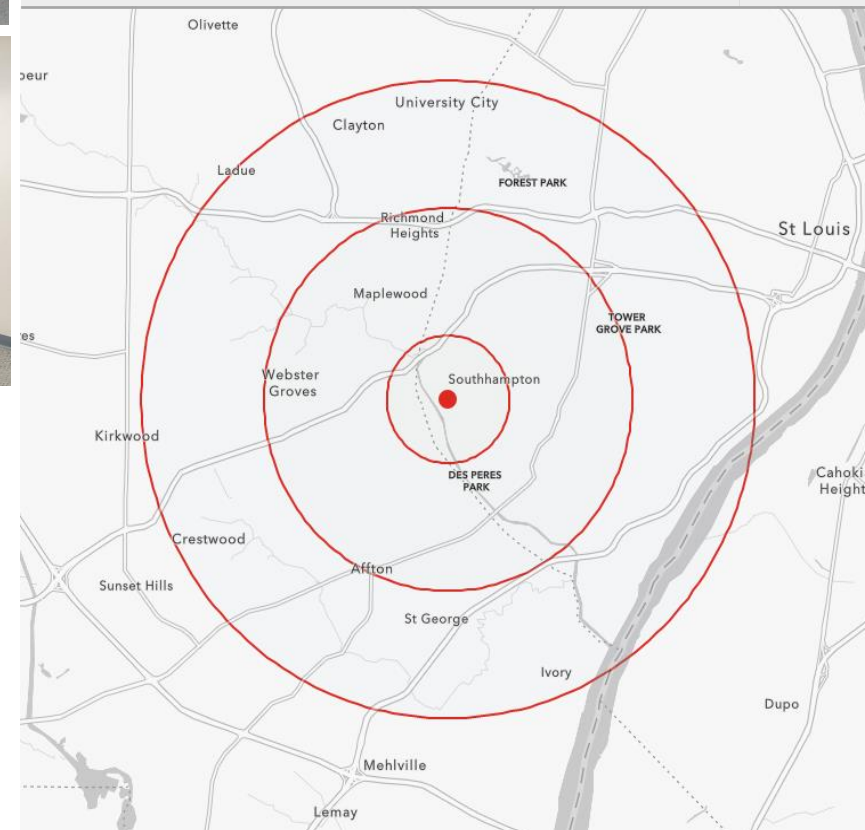
**6901 CHIPPEWA STREET
ST. LOUIS, MO 63109
3,519 S.F. | \$15.00/S.F. N.N.N.**

PROPERTY INFORMATION



- FREE STANDING OFFICE BUILDING LOCATED ON PROMINENT SIGNALIZED 4-WAY INTERSECTION
- 24 PARKING SPACES (6.86/1,000 S.F.)
- 20,000 VEHICLES PER DAY ON CHIPPEWA STREET
- 0.31 ACRE PARCEL
- LOCATED ON THE CORNER OF CHIPPEWA AND JAMIESON IN THE LINDENWOOD PARK NEIGHBORHOOD
- ZONED F (NEIGHBORHOOD COMMERCIAL)

DEMOGRAPHICS		1 MILE	3 MILES	5 MILES
POPULATION		15,415	147,825	365,352
HOUSEHOLDS		7,516	71,841	171,563
AVERAGE HH INCOME		\$103,260	\$90,585	\$85,045



SCAN HERE!



BEN CHERRY, COIM

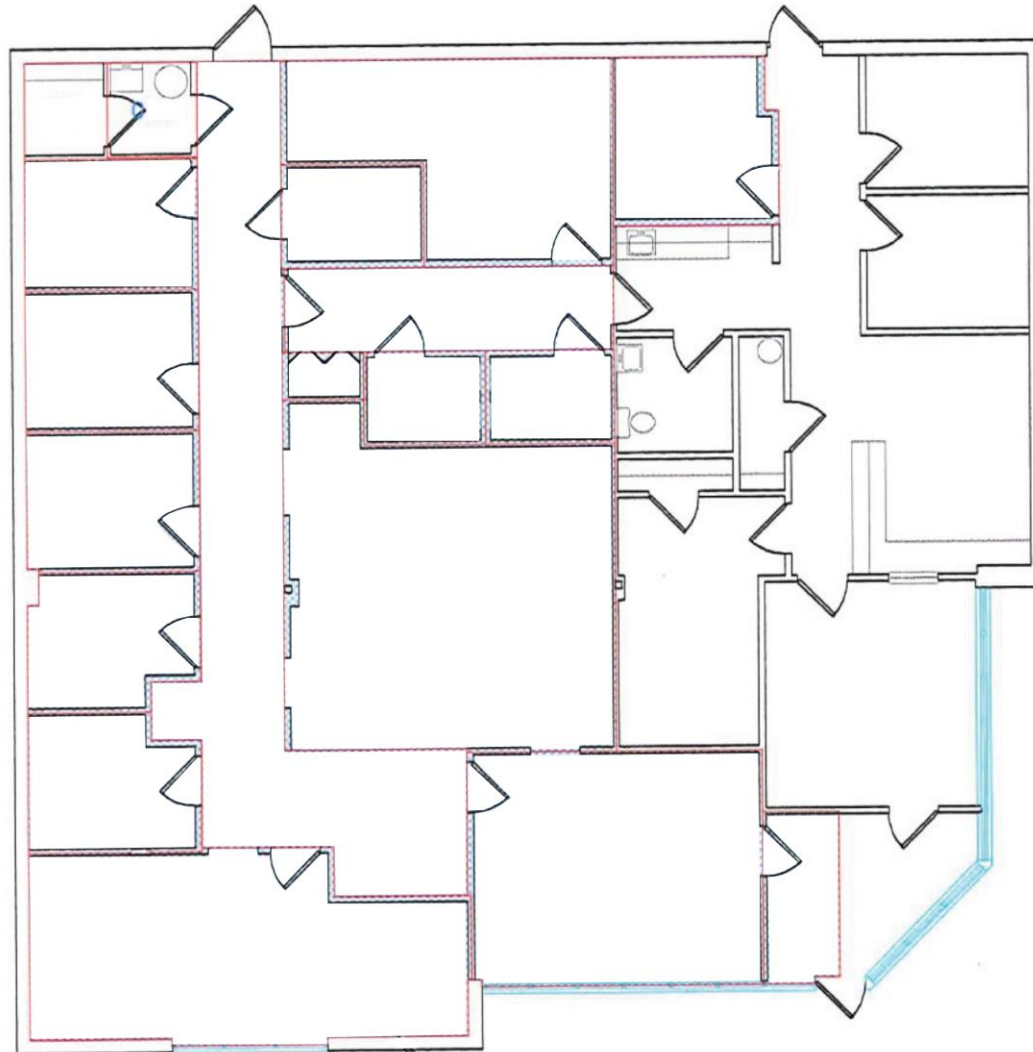
Phone: 314.647.6611 ext. 115
Ben@ManorRealEstate.com

CALEB ANTHONIS

Phone: 314.647.6611 ext. 126
Caleb@ManorRealEstate.com

**6901 CHIPPEWA STREET
 ST. LOUIS, MO 63109
 3,519 S.F. | \$15.00/S.F. N.N.N.**

FLOOR PLAN



SCAN HERE!



BEN CHERRY, COIM

Phone: 314.647.6611 ext. 115
Ben@ManorRealEstate.com

CALEB ANTHONIS

Phone: 314.647.6611 ext. 126
Caleb@ManorRealEstate.com

6901 CHIPPEWA STREET
ST. LOUIS, MO 63109
3,519 S.F. | \$15.00/S.F. N.N.N.

AERIAL



SCAN HERE!



BEN CHERRY, COIM

Phone: 314.647.6611 ext. 115
 Ben@ManorRealEstate.com

CALEB ANTHONIS

Phone: 314.647.6611 ext. 126
 Caleb@ManorRealEstate.com

6901 CHIPPEWA STREET
ST. LOUIS, MO 63109
3,519 S.F. | \$15.00/S.F. N.N.N.

Information is from appropriate sources but is not guaranteed. No representation is made of environmental or other conditions of the property. We recommend Lessee investigate fully.