



**WILLOWBROOK  
PLAZA**

SCAN HERE!



**CALEB ANTHONIS**

Phone: 314.647.6611 ext. 126  
[Caleb@ManorRealEstate.com](mailto:Caleb@ManorRealEstate.com)

**10451-10483 OLD OLIVE STREET ROAD  
CREVE COEUR, MO 63141  
2,860 S.F. | \$18.00/S.F. N.N.N.**






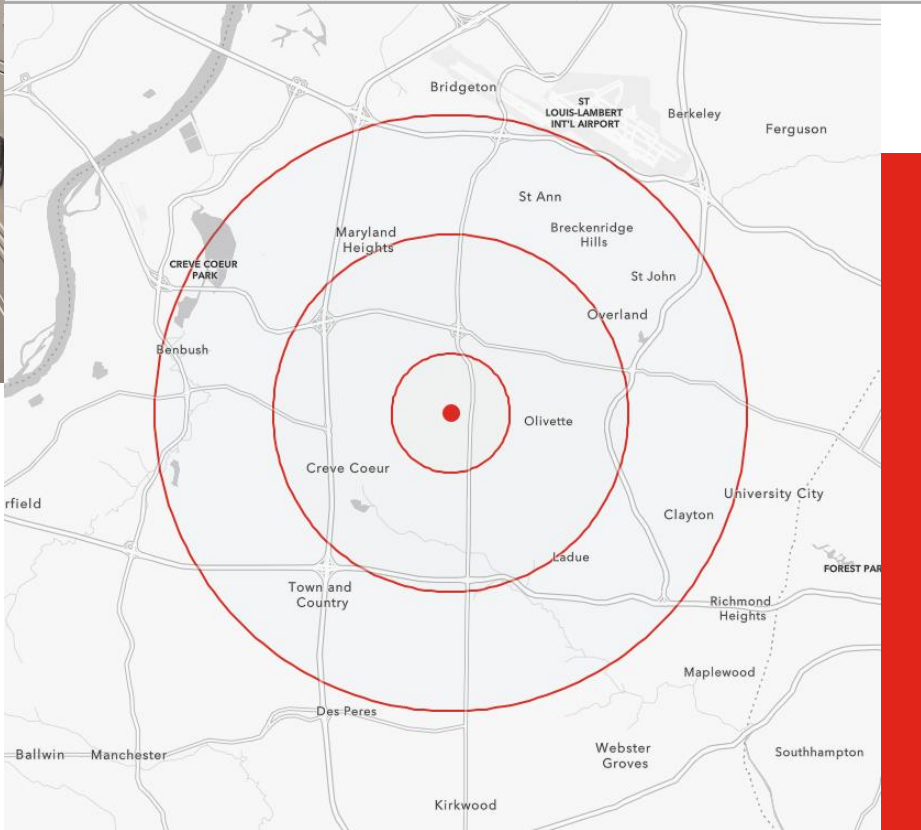
**FOR LEASE**

**PROPERTY INFORMATION**



- WELL ESTABLISHED AND WELL MAINTAINED CREVE COEUR SHOPPING CENTER
- ADJACENT TO AMC CREVE COEUR MOVIE THEATER, PANDA EXPRESS, CALIFORNIA PIZZA KITCHEN, PANERA AND KOHN'S DELI
- SURROUNDED BY NUMEROUS NEW MULTI-FAMILY DEVELOPMENTS
- LARGE PARKING LOT OFFERS PLENTIFUL NON-RESERVED ON SITE PARKING
- LONG TIME OWNERSHIP
- PROFESSIONALLY MANAGED

DEMOGRAPHICS	1 MILE	3 MILES	5 MILES
POPULATION 	10,693	70,300	210,849
HOUSEHOLDS 	5,037	30,315	90,622
AVERAGE HH INCOME 	\$125,392	\$130,956	\$126,785



SCAN HERE!

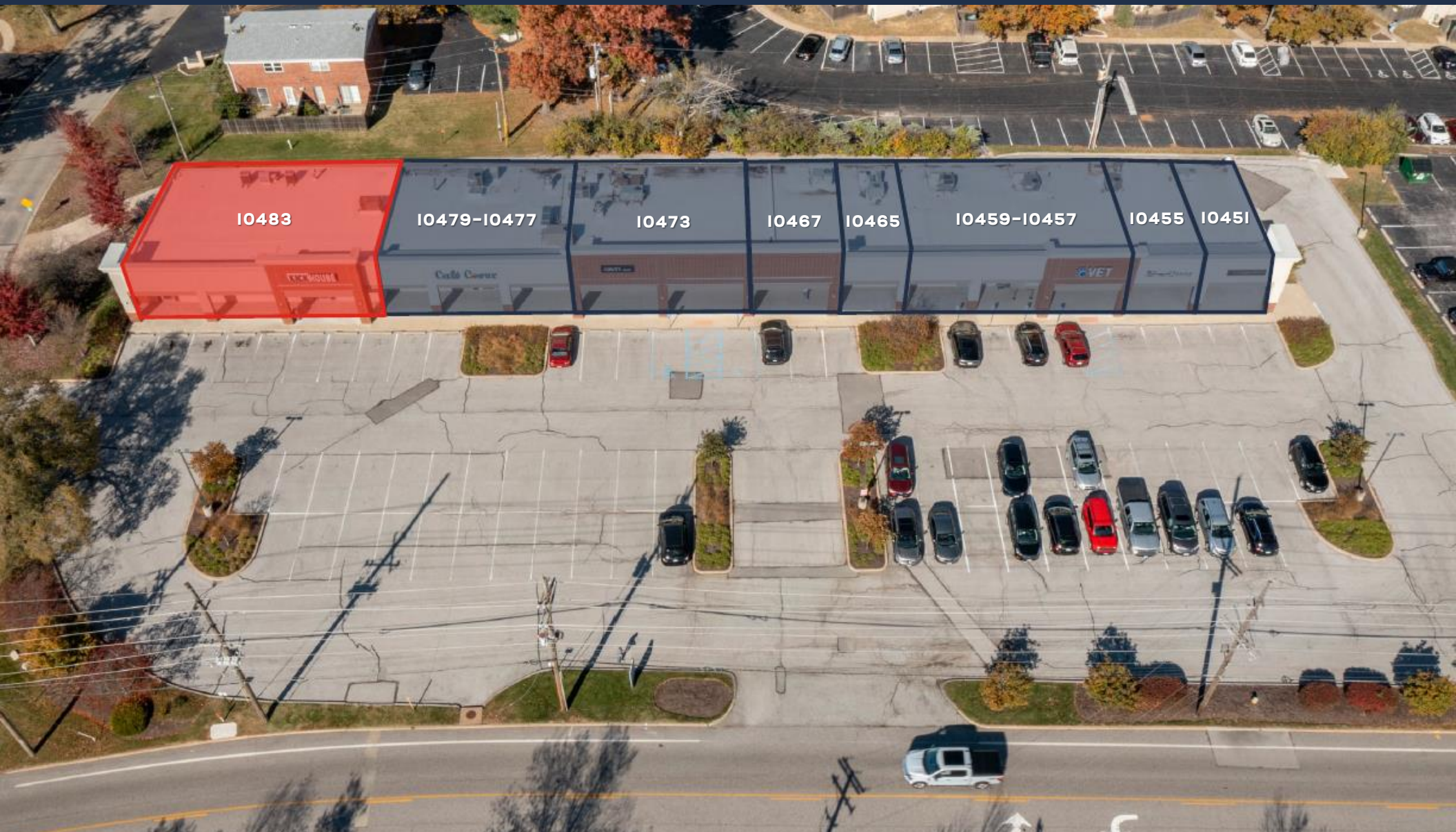


**CALEB ANTHONIS**

Phone: 314.647.6611 ext. 126  
 Caleb@ManorRealEstate.com

**10451-10483 OLD OLIVE STREET ROAD  
 CREVE COEUR, MO 63141  
 2,860 S.F. | \$18.00/S.F. N.N.N.**





SCAN HERE!



**CALEB ANTHONIS**

Phone: 314.647.6611 ext. 126

[Caleb@ManorRealEstate.com](mailto:Caleb@ManorRealEstate.com)

**10451-10483 OLD OLIVE STREET ROAD  
CREVE COEUR, MO 63141  
2,860 S.F. | \$18.00/S.F. N.N.N.**