



**TRI-COUNTY
MEDICAL OFFICE
SUITE**

SCAN HERE!



EDDIE CHERRY

Phone: 314.647.6611 ext. 113
Eddie@ManorRealEstate.com

MARK CLARKSON

Phone: 314.647.6611 ext. 127
MClarkson@ManorRealEstate.com

4800 MEXICO ROAD, SUITE 105

ST. PETERS, MO 63376

1,864 S.F. | \$269,500

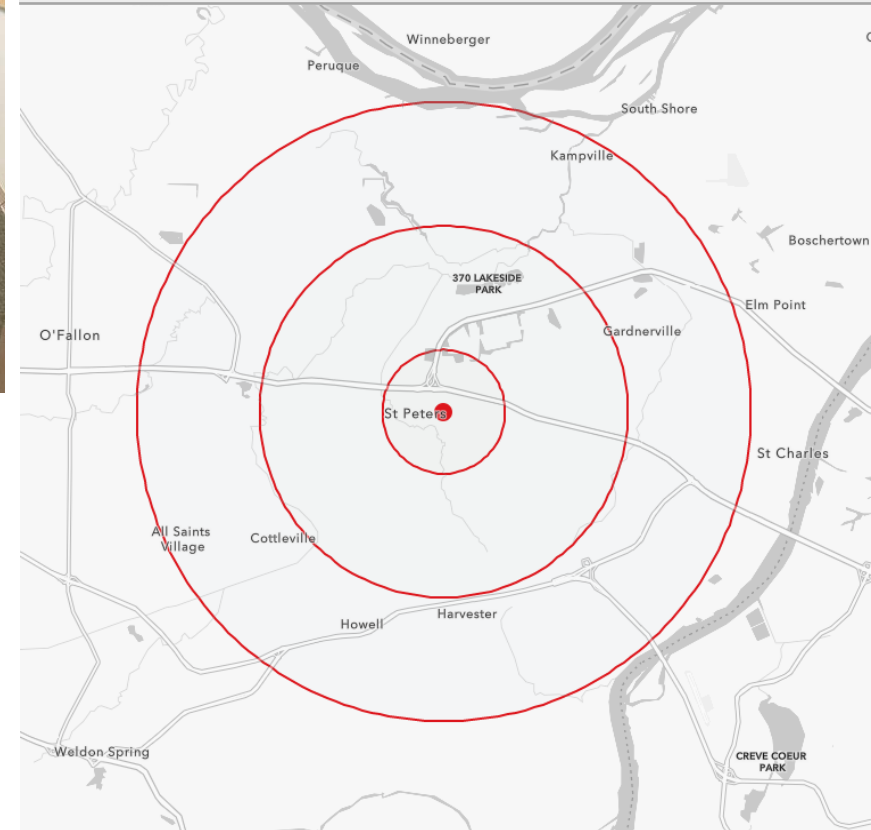
\$18.00/S.F. M.G.

PROPERTY INFORMATION



- MEDICAL/OFFICE CONDO FOR SALE OR LEASE
- PROMINENT TRI-COUNTY MEDICAL OFFICE BUILDING
- MONUMENT SIGNAGE AVAILABLE ALONG MEXICO ROAD
- FIRST LEVEL SPACE WITH EXTERIOR ENTRANCES
- BUILDING DEVELOPED IN 2000
 - NEW ROOF IN 2017
 - NEW PARKING LOT IN 2019
- JOIN FAST-GROWING ST. PETERS SPECIAL DISTRICT

DEMOGRAPHICS		1 MILE	3 MILES	5 MILES
POPULATION		7,455	69,002	168,076
HOUSEHOLDS		3,067	28,154	67,429
AVERAGE HH INCOME		\$122,970	\$107,755	\$112,117



SCAN HERE!



EDDIE CHERRY

Phone: 314.647.6611 ext. 113
Eddie@ManorRealEstate.com

MARK CLARKSON

Phone: 314.647.6611 ext. 127
MClarkson@ManorRealEstate.com

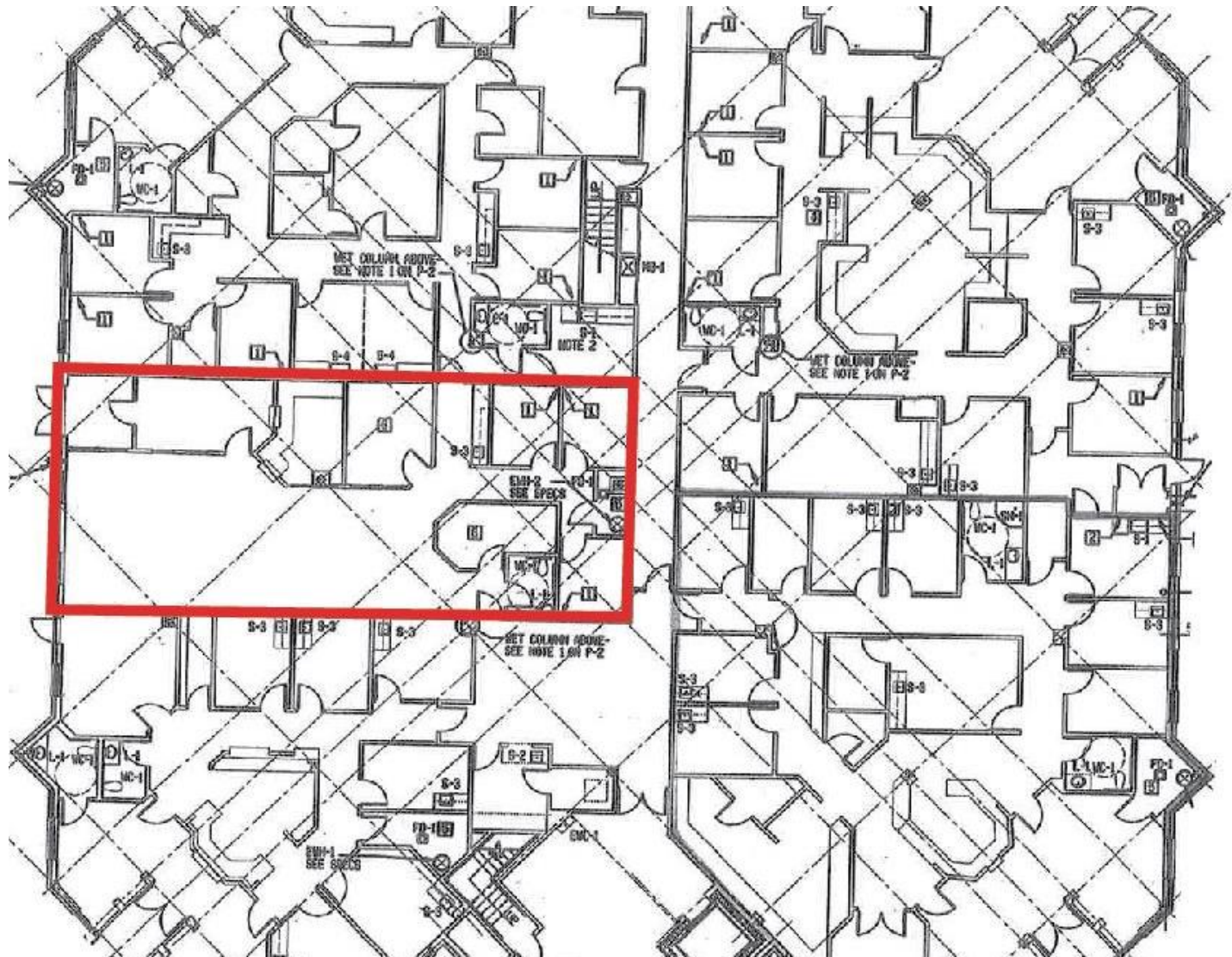
4800 MEXICO ROAD, SUITE 105

ST. PETERS, MO 63376

1,864 S.F. | \$269,500

\$18.00/S.F. M.G.

FLOOR PLAN



SCAN HERE!



EDDIE CHERRY

Phone: 314.647.6611 ext. 113
Eddie@ManorRealEstate.com

MARK CLARKSON

Phone: 314.647.6611 ext. 127
MClarkson@ManorRealEstate.com

4800 MEXICO ROAD, SUITE 105

ST. PETERS, MO 63376

1,864 S.F. | \$269,500

\$18.00/S.F. M.G.



SCAN HERE!



EDDIE CHERRY

Phone: 314.647.6611 ext. 113
 Eddie@ManorRealEstate.com

MARK CLARKSON

Phone: 314.647.6611 ext. 127
 MClarkson@ManorRealEstate.com

4800 MEXICO ROAD, SUITE 105

ST. PETERS, MO 63376

1,864 S.F. | \$269,500

\$18.00/S.F. M.G.