

FOR LEASE

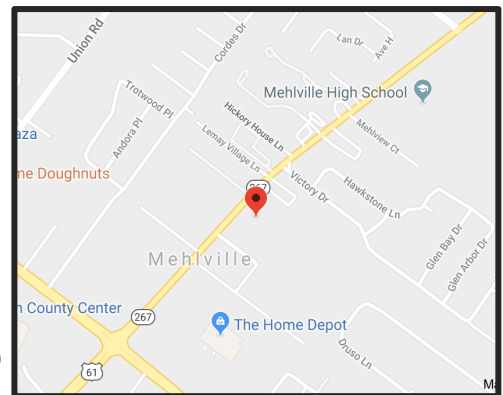
1.29 Acre Parcels



\$7,500/month | 1.29 ACRES

Covington Manor Parking Lots 3622 Lemay Ferry Rd St. Louis, MO 63025

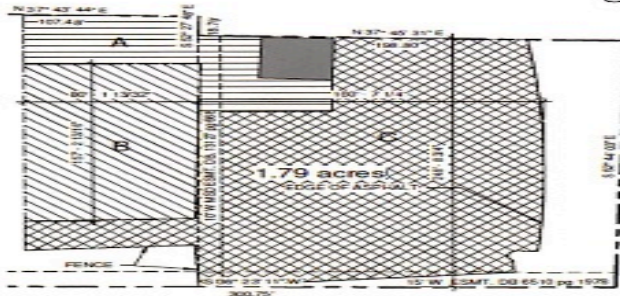
- Convenient South County Location, right off intersection of Two Major Interstates
- Convenient Access to I-55 (<0.8 mi), I-255 (<0.7 mi), I-44 (6 mi)



For more information on this property, please contact:
Grant Fenster | (314) 647-6611x127 | Grant@ManorRealEstate.com
Ben Cherry, CCIM | (314) 647-6611x115 | Ben@ManorRealEstate.com
3270 Hampton Avenue, Suite 100, St. Louis, MO 63139

FOR LEASE

1.29 Acre Parcel



Covington Manor Lane

Lemay Ferry Road



A	0.20 acres 8,712 SF	
B	0.29 acres 12,623 SF	
C	0.82 acres 35,719 SF	

\$7,500/Month | 1.29 ACRES

- Zoned C-3 (Shopping District Use)
- Great Location for Car Parking and/or Auto Dealership excess inventory
- Close Proximity to Harley Davidson, multiple Apartment Complexes, and Shopping Center

	Lot A	Lot B	Lot C	Total
Acreage (Square Footage)	0.20 Acres (8,712 s.f.)	0.29 Acres (12,623 s.f.)	0.80 Acres (35,719 s.f.)	1.29 Acres (57,054 s.f.)
# of Cars	15	32	92	139
\$\$/month	\$1,199	\$1,756	\$4,999	\$7,500

For more information on this property, please contact:

Grant Fenster | (314) 647-6611x127 | Grant@ManorRealEstate.com
Ben Cherry, CCIM | (314) 647-6611x115 | Ben@ManorRealEstate.com

3270 Hampton Avenue, Suite 100, St. Louis, MO 63139