

FOR LEASE

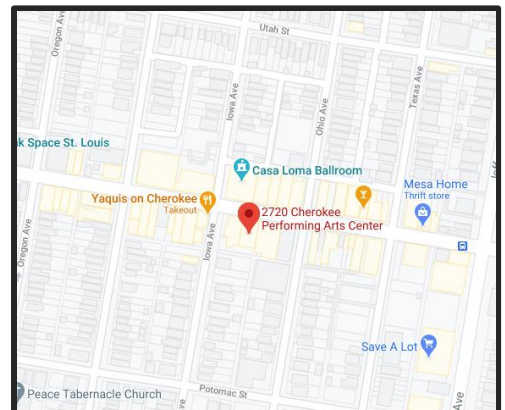
Cherokee Street Commercial Space



\$8.00/S.F. + Utilities | 15,000+ SQUARE FEET

2720 Cherokee Street St. Louis, MO 63118

- Open Floor Plan
- Currently Event/Venue Space
- Rear Patio with new Concrete
- Large Storefront Window
- Lower-Level Space Also Available



For more information on this property, please contact:

Mark Clarkson | (314) 647-6611 x127 | MClarkson@ManorRealEstate.com

Caleb Anthonis | (314) 647-6611 x126 | Caleb@ManorRealEstate.com

ManorRealEstate.com

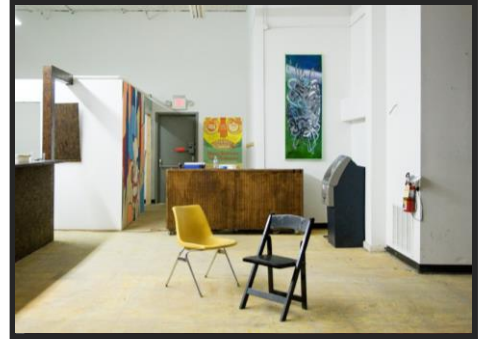
FOR LEASE

Cherokee Street Commercial Space



\$8.00/S.F. + Utilities | 15,000+ SQUARE FEET

- 7,500 S.F. 1st Floor with Full Bar
- 7,500 S.F. 2nd Floor with Maple Flooring
- Storage Space
- Office Space
- Open Floor Plan can be Divided Between First and Second Floor
- Located in the heart of the [Cherokee Street District](#)



For more information on this property, please contact:

Mark Clarkson | (314) 647-6611 x127 | MClarkson@ManorRealEstate.com

Caleb Anthonis | (314) 647-6611 x126 | Caleb@ManorRealEstate.com