

FOR LEASE

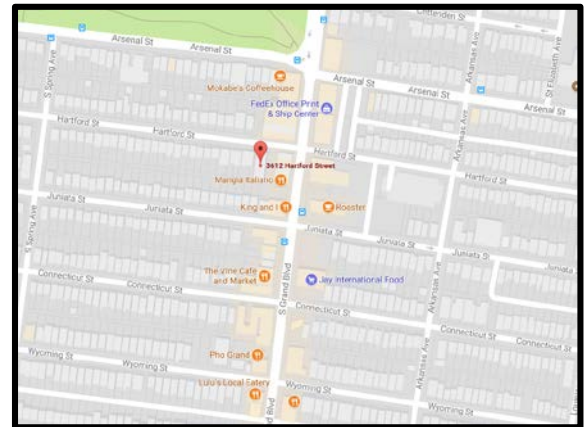
Creative Office Space



\$16.50/S.F. NNN | 4,702 SQUARE FEET

3612 Hartford Street
St. Louis, MO 63116

- Historic Building Built in 1911
- Large, Open Street Level Space
- Convenient Location off Grand



For more information on this property, please contact:
Bari Hersckowitz | (314) 647-6611 x119 | Bari@ManorRealEstate.com
3270 Hampton Avenue, Suite 100, St. Louis, MO 63139

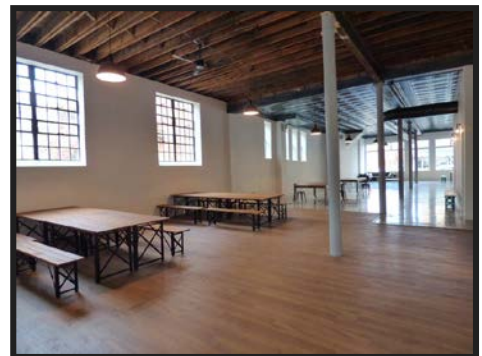
FOR LEASE

Creative Office Space



\$16.50/S.F. NNN | 4,702 SQUARE FEET

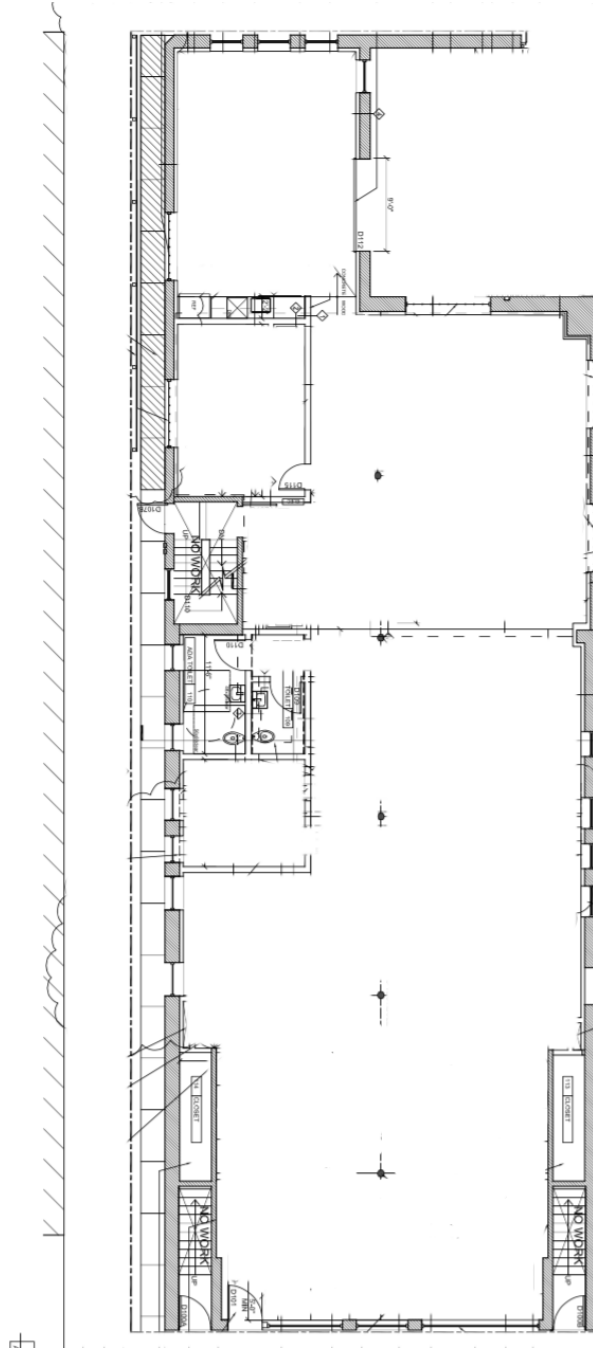
- Kitchen with Appliances Included, Private Office & Conference Room
- High Ceilings
- Handicap Accessible Building
- 2 ADA Accessible Restrooms
- Ideal for Creative Office and/or Retail or Event Space
- 2 Assigned Parking Spots and Ample Off-Street Parking Available
- Basement Storage Included
- Walking Distance to Restaurants, Bars and Tower Grove Park



For more information on this property, please contact:
Bari Hersckowitz | (314) 647-6611 x119 | Bari@ManorRealEstate.com
3270 Hampton Avenue, Suite 100, St. Louis, MO 63139

FOR LEASE

Creative Office Space



For more information on this property, please contact:
Bari Hersckowitz | (314) 647-6611 x119 | Bari@ManorRealEstate.com
3270 Hampton Avenue, Suite 100, St. Louis, MO 63139